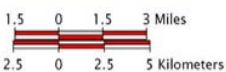
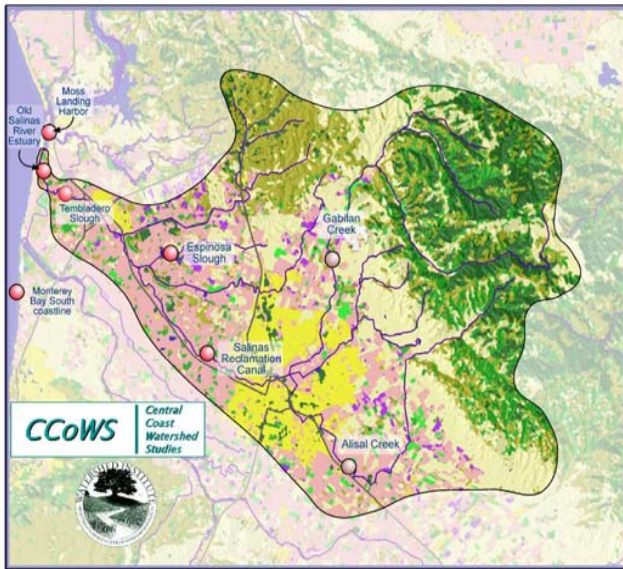


# GABILAN WATERSHED PROGRAM AREA

INCLUDES FARMLAND IN & AROUND:

**SALINAS, CASTROVILLE, BLANCO,  
ALISAL, GABILAN, NATIVIDAD, BLACKIE  
ROAD AND THE RECLAMATION DITCH**



Watershed Boundary  
Streams  
Highways



Map created by Wend Newman & Fred Watson, CCoWS, The Watershed Institute, CSUMB, (C) 2003

 *Resource Conservation District  
of Monterey County*

744-A La Guardia Street  
Salinas, CA 93905

Phone: (831) 424-1036 ext. 124

Funding for this program and the development of this brochure was provided in whole or in part through an agreement with the State Water Resources Control Board (SWRCB) and through a subcontract with the San Jose State University Foundation (SJSUF). The contents of this document do not necessarily reflect the views and policies of the SWRCB or SJSUF.

The Resource Conservation District of Monterey County prohibits discrimination in all its programs and activities on the basis of race, color, national origin, sex, religion, age, disability, political beliefs, sexual orientation, or marital or family status.

Equal Opportunity provider and employer.

# GABILAN WATERSHED ASSISTANCE PROGRAM



 *Resource Conservation District  
of Monterey County*

# AGRICULTURAL WATER QUALITY MANAGEMENT IN THE GABILAN WATERSHED



Sediment basin capturing stormwater runoff from fields

**GOAL:** Protect and improve water quality in the Gabilan watershed while helping farmers meet their production goals.

## STRATEGIES:

- Advise landowners and growers how to reduce the loss of soil, nutrients and pesticides from the farm.
- Ensure that practices are compatible with farming methods, pest control needs and the bottom line.
- Design structures for conservation projects such as sediment basins and channel stabilization.
- Facilitate permits for conservation practices.
- Help cooperators install inexpensive practices such as cover crops, grassed waterways and filter strips.
- Help cooperators obtain financial assistance for water quality projects.

## PARTNERS:

### *Resource Conservation District of Monterey County*

The RCD is a non-regulatory special district which provides technical, permitting and some competitive financial assistance for conservation practices to agricultural and rural landowners and operators.

### *USDA Natural Resources Conservation Service*

NRCS is a non-regulatory federal agency which provides technical and competitive cost-share assistance to agricultural and rural landowners and operators for conservation practices. Website: [www.nrcs.usda.gov](http://www.nrcs.usda.gov)

### *Community Alliance with Family Farmers*

CAFF is a non-profit organization which assists farmers to install conservation plantings, and conducts meetings and field days that provide information on biological farming and other topics relevant to local farmers and ranchers. Website: [www.caff.org](http://www.caff.org)

### *University of California Cooperative Extension*

UCCE is a land-grant institution which conducts research on agricultural production practices and co-sponsors informational workshops, field days, and short courses for agricultural landowners and operators. Website: <http://cemonterey.ucdavis.edu>



Clearing sand from creek bed



Restored creek

## ASSISTANCE AVAILABLE:

- FREE technical assistance for installing conservation practices
- Competitive cost-share assistance for installing conservation practices
- Informational workshops and short courses
- Conservation practice permit assistance
- FREE plants for erosion control and integrated pest management (IPM)

## SAMPLE CONSERVATION PRACTICES

### *Engineered Practices*

- Stormwater Pipes
- Storm Water Basins
- Sediment Basins
- Erosion Control
- Stream Bank Stabilization
- Tail-water Recovery Systems
- Contour farming/row arrangement

### *Non-Engineered Practices*

- Erosion control planting
- Hedgerows
- Cover crops
- Filter strips
- Grassed waterways
- Farm road seeding
- Wildlife Habitat improvement



Eroding waterway



Grassed waterway